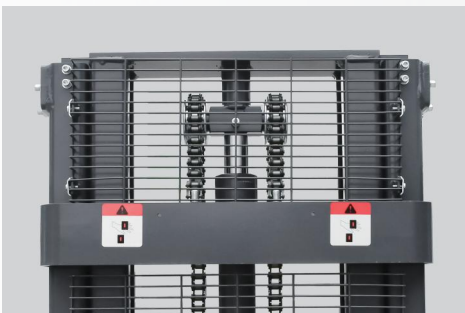


MBD15 Electric Pallet Stacker

Load capacity: 1500 Kgs



SPECIFICATION

Characteristics

1.1	Model		MBD1030	MBD1530
1.2	Power type		Electric	Electric
1.3	Operation		Pedestrian	Pedestrian
1.4	Rated capacity	Q(kg)	1000	1500
1.5	Load centre	c(mm)	600	600
1.6	Front overhang	x(mm)	780	780
1.7	Wheelbase	y(mm)	1230	1225
1.8	Service weight with battery	kg	465	504

Weights

2.1	Wheels		PU	PU
2.2	Driving wheel size	Φ xw(mm)	Φ 210×70	Φ 210×70
2.3	Bearing wheel size	Φ xw(mm)	Φ 80×70	Φ 80×70
2.4	Additional wheels size	Φ xw(mm)	Φ 150×58	Φ 115×55
2.5	Wheels,number front/rear(x= driven)		1x/4	1x+1/4
2.6	Track width, rear	b10(mm)	516	522
2.7	Track width, front	b11(mm)	410/535	410/535

Dimension

3.1	Mast closed height	h1(mm)	1995	1995
3.2	Free Lift height	h2(mm)	0	0
3.3	Lift height	h3(mm)	3000	3000
3.4	Mast extended height	h4(mm)	3452	3452
3.5	Overall height (With handle)	h14(mm)	870/1200	700/1225
3.6	Lowered fork height	h13(mm)	86	86
3.7	Overall length	l1(mm)	1755	1740
3.8	Length to fork face	l2(mm)	605	590
3.9	Overall width	b1/ b2 (mm)	795	795
3.10	Fork size	s/e/l (mm)	60/160/1150	60/160/1150
3.11	Fork outside width	b5 (mm)	570/695	570/695
3.12	Min.Ground clearance	m2 (mm)	26	26
3.13	Aisle width with pallet 1000× 1200 across forks	Ast (mm)	2245	2245
3.14	Aisle width with pallet 800 ×1200 along forks	Ast (mm)	2185	2185
3.15	Min.Turning radius	Wa (mm)	1405	1405

Performance

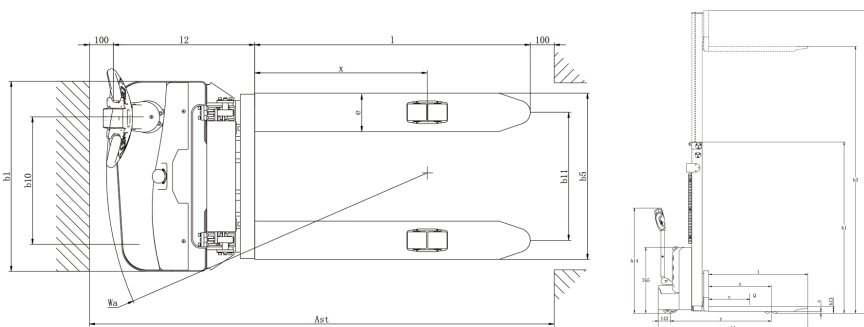
4.1	Travel speed, load/unload	(km/h)	4.0/4.2	4.0/4.2
4.2	Lifting speed, load/unload	(mm/s)	92/136	92/136
4.3	Lowering speed, load/unload	(mm/s)	112/98	112/98
4.4	Max. climbing ability, with/without load	(%)	3/10	3/10
4.5	Service brake		Electromagnetic	Electromagnetic

Drive

5.1	Drive motor, 60 minute rating	(kw)	0.75	0.75
5.2	Lift motor, rating S3-15%	(kw)	2.2	2.2
5.3	Battery voltage/rated capacity	(V/Ah)	2×12/100	2×12/100
5.4	Battery weight(± 5%)	(kg)	2×27	2×27

Other

6.1	Drive control type		DC	DC
6.2	Noise level at operator 's ear	(dB(A))	≤70	≤70
6.3	Steering type		Mechanical	Mechanical



PRODUCT FEATURES

1) Side drive design effectively reduces working aisles and turning radius, provides better visibility, and making it ideal for narrow aisles.

2) The extended design of the operating handle conforms to ergonomics and ensures comfortable operation

3) The key switch, power meter, up/down button, and turtle speed switch are all integrated into the operating handle for easier operation.

4) External charger provides better heat dissipation performance, avoiding damage caused by vibration during vehicle operation.

5) Permanent magnet motor drive system, small size, light weight, low loss, and high efficiency

6) Installation of a high-density wire protective net ensures strength, durability, and excellent protection.

7) Maintenance-free batteries cut the need of replacement within other tools, offering greater convenience.



BANYITONG SCIENCE & TECHNOLOGY DEVELOPING CO.,LTD

Tel: +86 551 6219 3112

E-mail: sales@mimachina.com

Website: www.mimaforklift.com

Add: Crossing of Daihe Road and Cailun Road, Hefei, China